

**OPEN HOUSE AND INFORMATION
SESSION
MARCH 10TH, 2010**

**ANNEXATION PROPOSALS BY THE
MD OF FOOTHILLS AND CITY OF CALGARY**



**HEATHER HEMINGWAY – MD MUNICIPAL PLANNER
AND
NEIL YOUNGER – SENIOR PLANNER, CITY OF CALGARY**

Introduction

Welcome and thank you for coming

Representing the MD of Foothills

Deputy Reeve Larry Spilak
Councillor Ron Chase
Councillor Terry Waddock

Representing the City of Calgary

Aldermen Diane Colley-Urquhart
Aldermen Linda Fox-Mellway

The elected officials noted are all members of the Intermunicipal
Committee and the Annexation Committee

MD Staff members:

Heather Hemingway
Julie Mclean
Donna Thurston

City of Calgary Staff Members:

Neil Younger
Tim Creelman
Salma Mohiuddin

Presentation Outline

- Introductions
- Goals for This Evening
- The Annexation Applications
- How these Applications are Tied Together
- The Spruce Meadows Annexation
- The Sirocco Annexation
- The Annexation Process
- Next Steps
- Questions

Our Goals for this Evening

WHY ARE WE HERE TONIGHT?

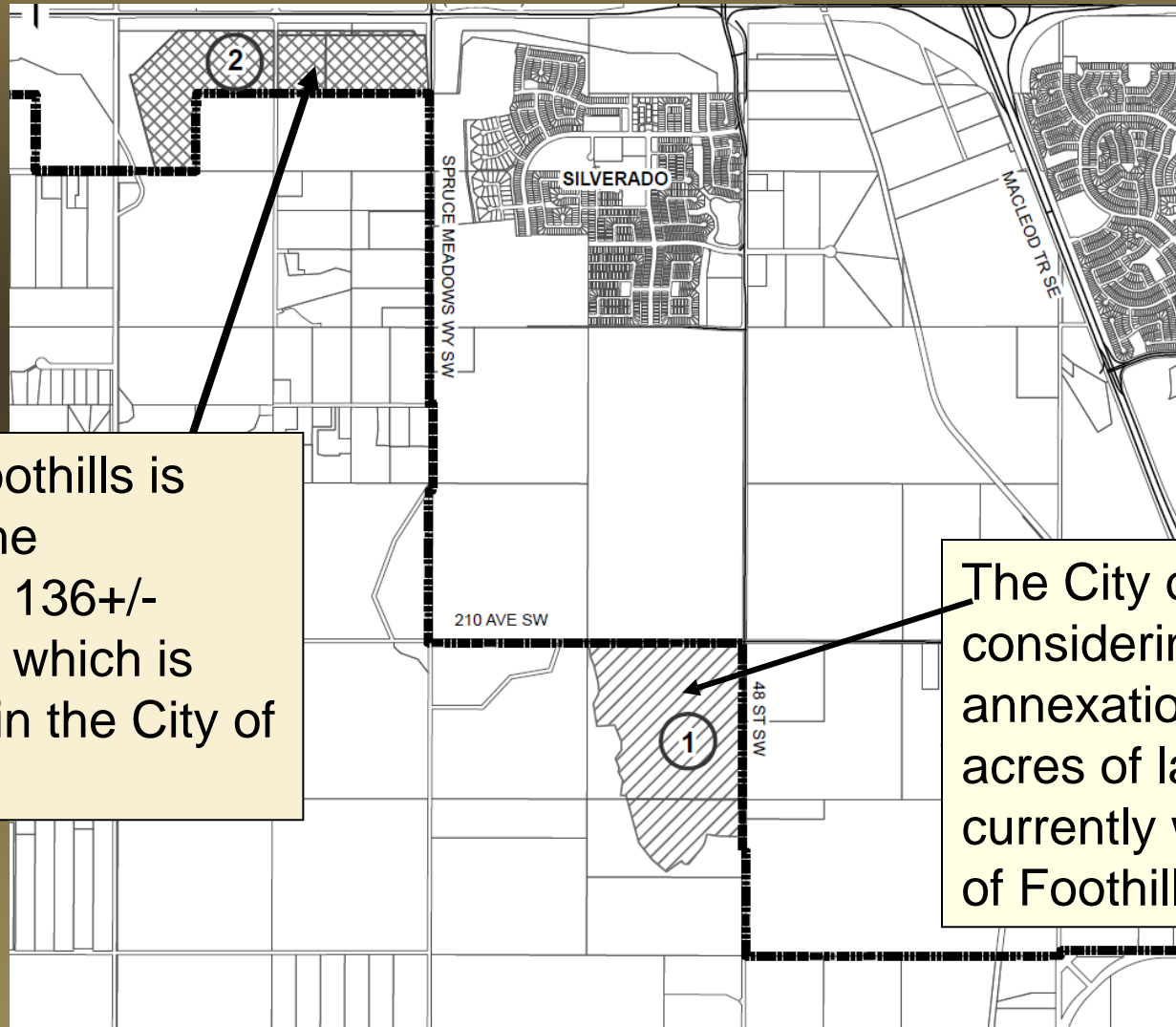
- To provide information and answer questions on the two annexation applications currently underway;
- To hear comments and concerns on these two applications.

WHAT ARE WE HOPING TO ACHIEVE?

- A package of information containing your comments and concerns for both Councils as they consider these two annexation applications.

Annexation Areas

Two separate applications for annexation of land are being contemplated



The MD of Foothills is considering the annexation of 136+/- acres of land, which is currently within the City of Calgary.

The City of Calgary is considering the annexation of 176+/- acres of land, which is currently within the MD of Foothills.

How Are These Two Applications Tied Together

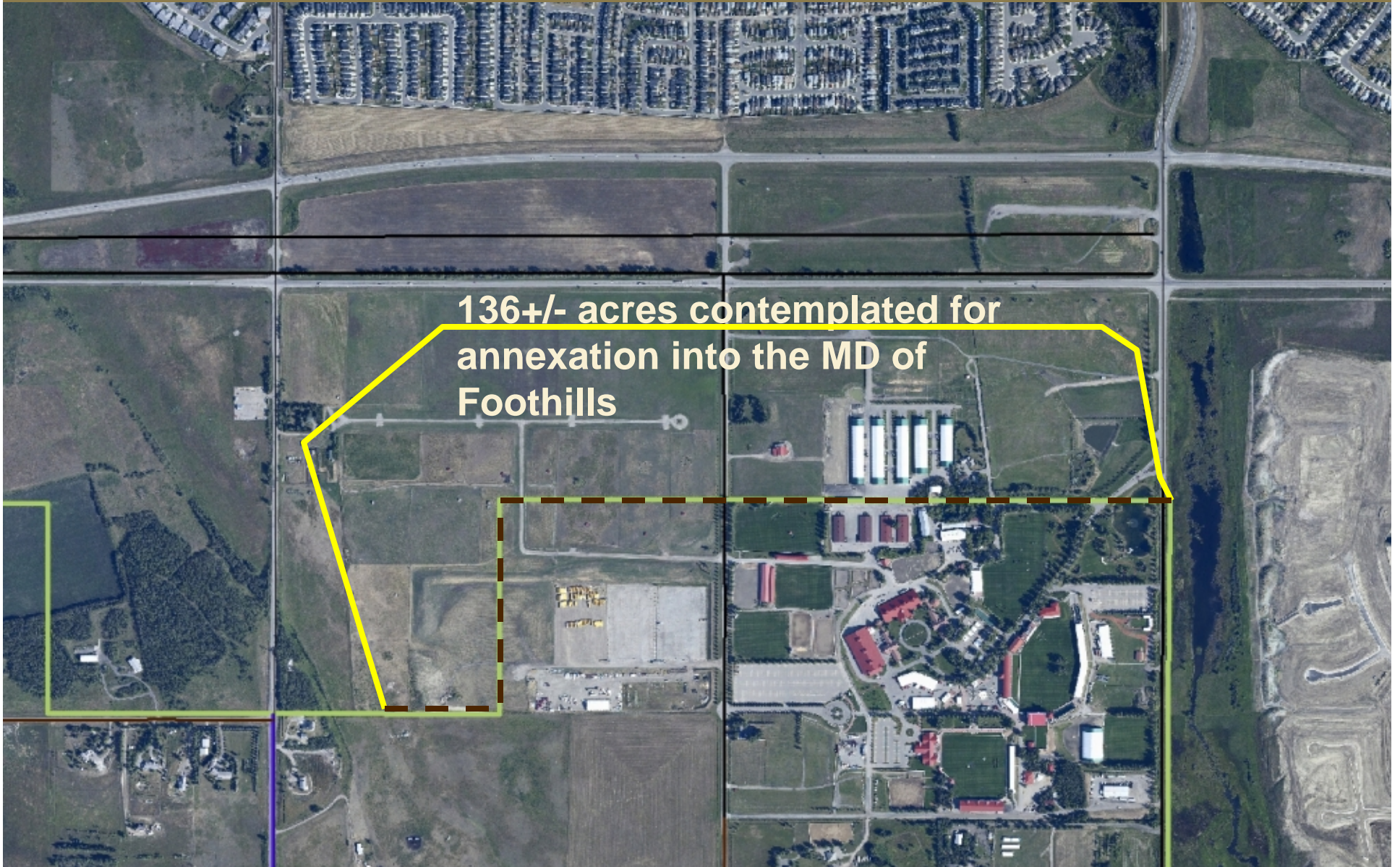
- Memorandum of Understanding and the Appeal by the City;
- Intermunicipal Development Plan;
- The City and the MD are working together on these applications;

Spruce Meadows



The lands

136+/- acres contemplated for
annexation into the MD of
Foothills



The lands



22x

Annexation area

Background

Municipal Government Board Order No. 19137

1989, the City of Calgary submitted an application to the Province which proposed the annexation of 61, 400 acres of land surrounding the City. A portion of these lands were for the creation of the Transportation and Utility Corridor (TUC), now more commonly known as the Ring Road.

The application submitted by the City did not propose to annex the lands subject to the application we are talking about today. The City never asked that these lands be included within their boundaries.

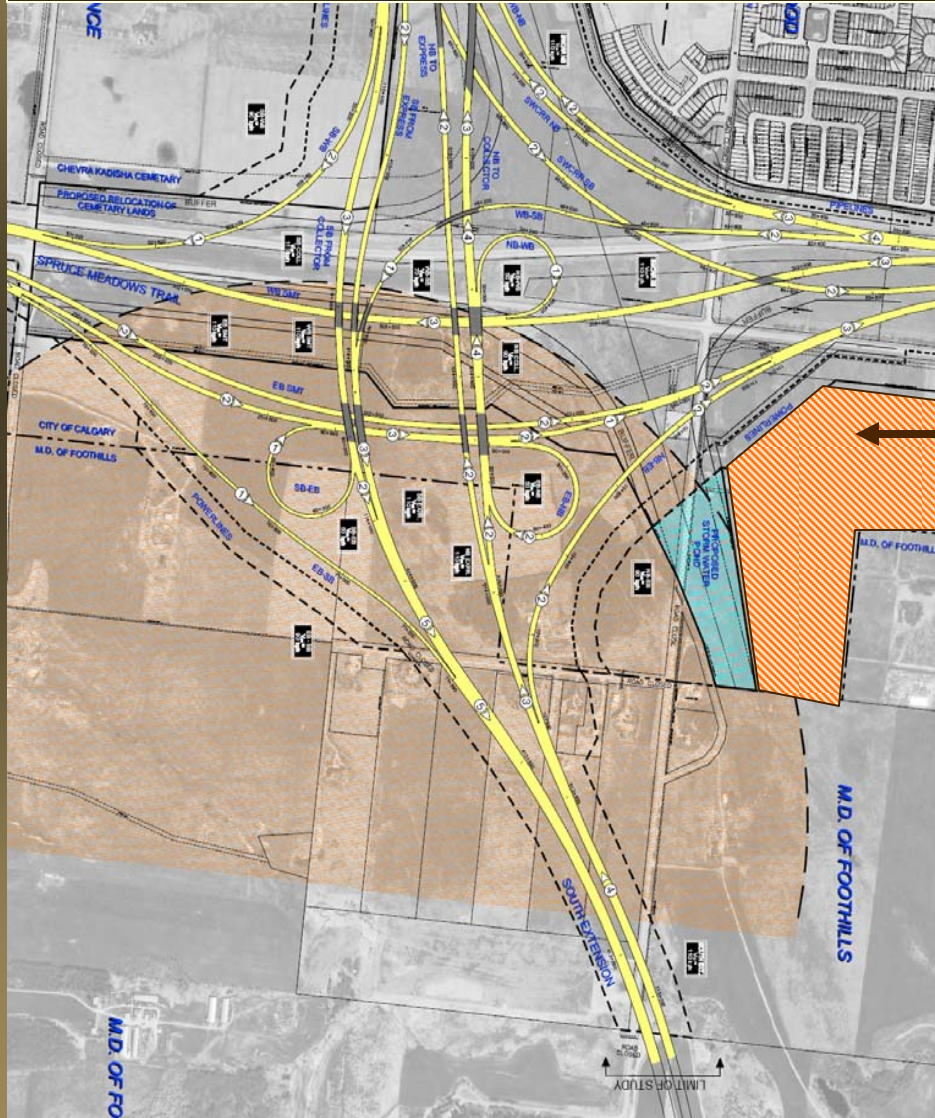
Background

The application was submitted to The Alberta Planning Board and subsequently the Legislature, where the application was amended. The Province removed some lands and added others, bringing the total number of acres down to 35, 420 acres.

Part of the changes the Province made included annexing the subject 136 acres into the City.

The reason that the Province did this was that the alignment of the Ring Road had not been determined. The Province was ensuring that the land base needed for the development of this important regional transportation network would be available.

Ring Road Alignment

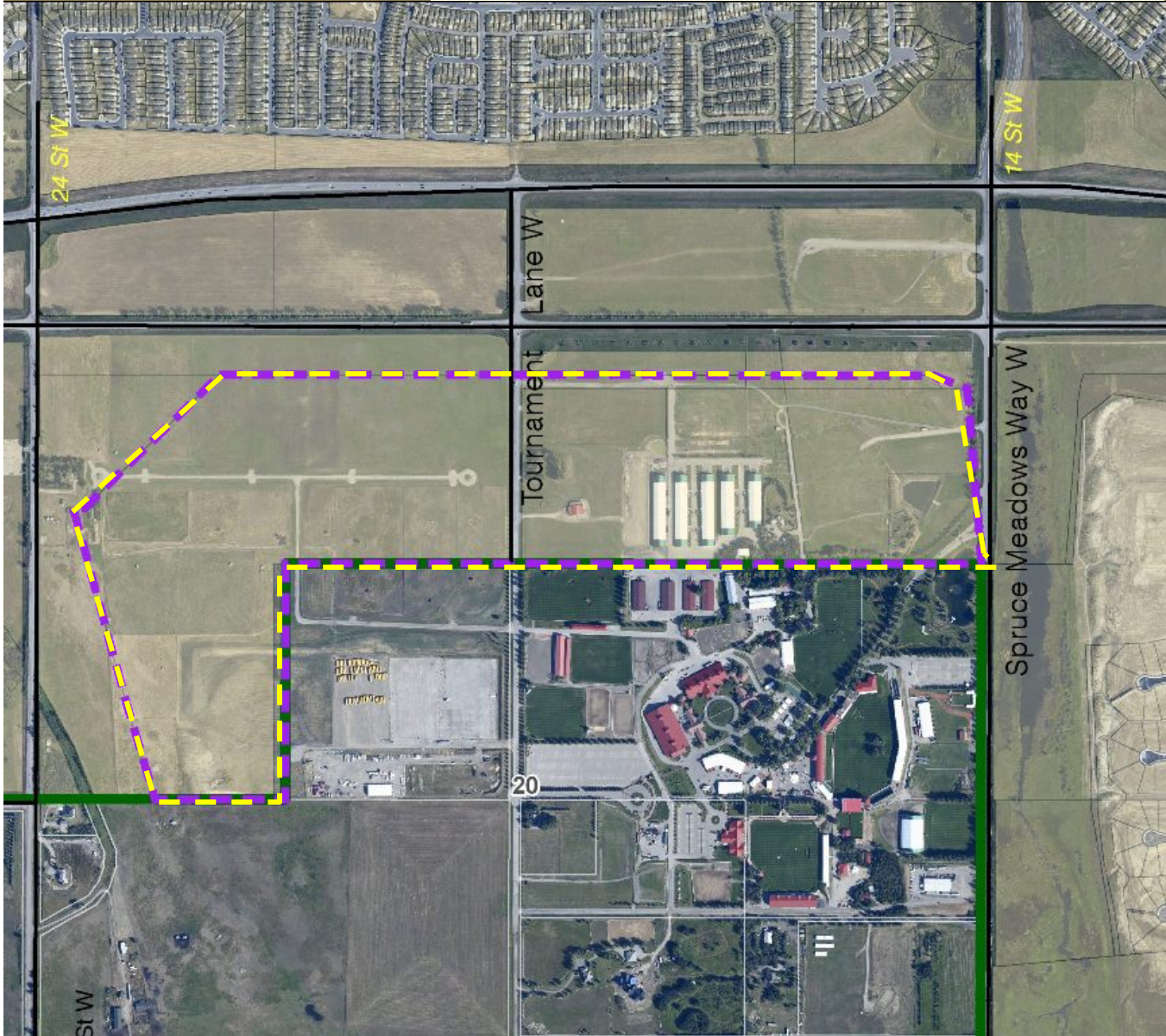


The Ring Road alignment has now been established in this area.

Portion of land contemplated for annexation

Lands subject to annexation application lie outside of the Transportation and Utility Corridor

Land Use



Subject lands are currently zoned in the City as Special Purpose - Future Urban Development Area, which are lands intended for future urban development and utility servicing

If in the MD of Foothills, the subject land will likely be zoned as Direct Control. This is the same zoning as the balance of the Spruce Meadow holdings.

Intermunicipal Development Plan (IDP)

In 1998, The City of Calgary and the MD of Foothills entered into a plan to address areas of mutual interest along our shared border.

The IDP outlines important considerations for both Municipalities, including identifying lands intended for City growth, which is called the Future Urban Growth Corridor. The Plan also addresses Spruce Meadows.

The Plan identifies Spruce Meadows as an internationally recognized premier equestrian facility, and that both Municipalities will cooperate to encourage the continuation of Spruce Meadows.

Justification – Why annex this land?

- The operational efficiency for the facility would be enhanced under one jurisdiction rather than two;
- The operation is better suited, better understood and better supported in and by a rural jurisdiction rather than an urban one;
- Rectify the boundaries that were drawn 25 years ago to what makes sense today now that the Transportation and Utility Corridor has been determined;
- Continue to support the development and operation of the world class facility for the benefit of MD residents and all residents of the region.

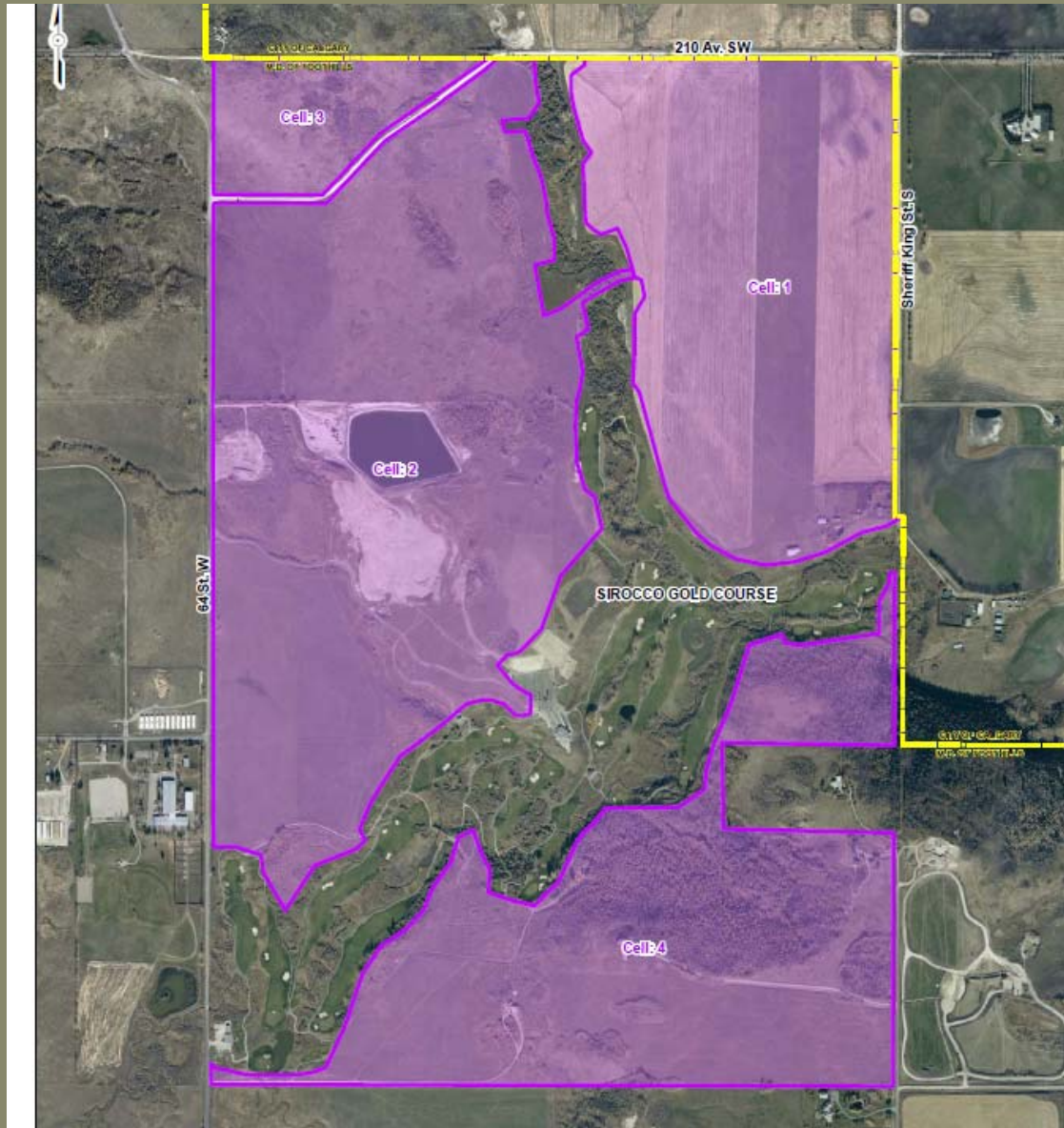
Tax and other Financial Implications

Under the Memorandum of Agreement negotiated by The City and The MD of Foothills, it has been agreed that there will be no compensation paid to either municipality for either of these applications.

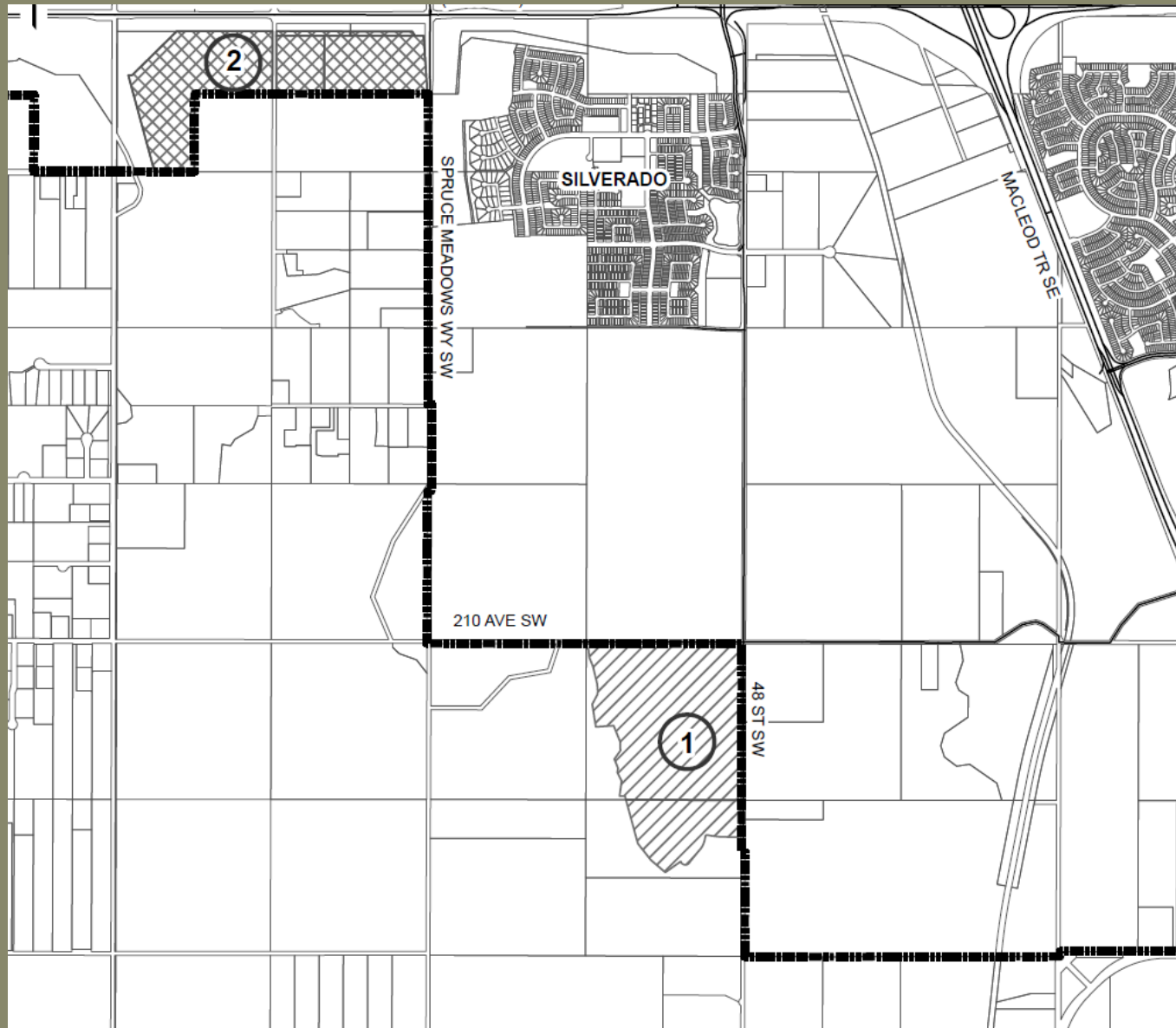
Sirocco



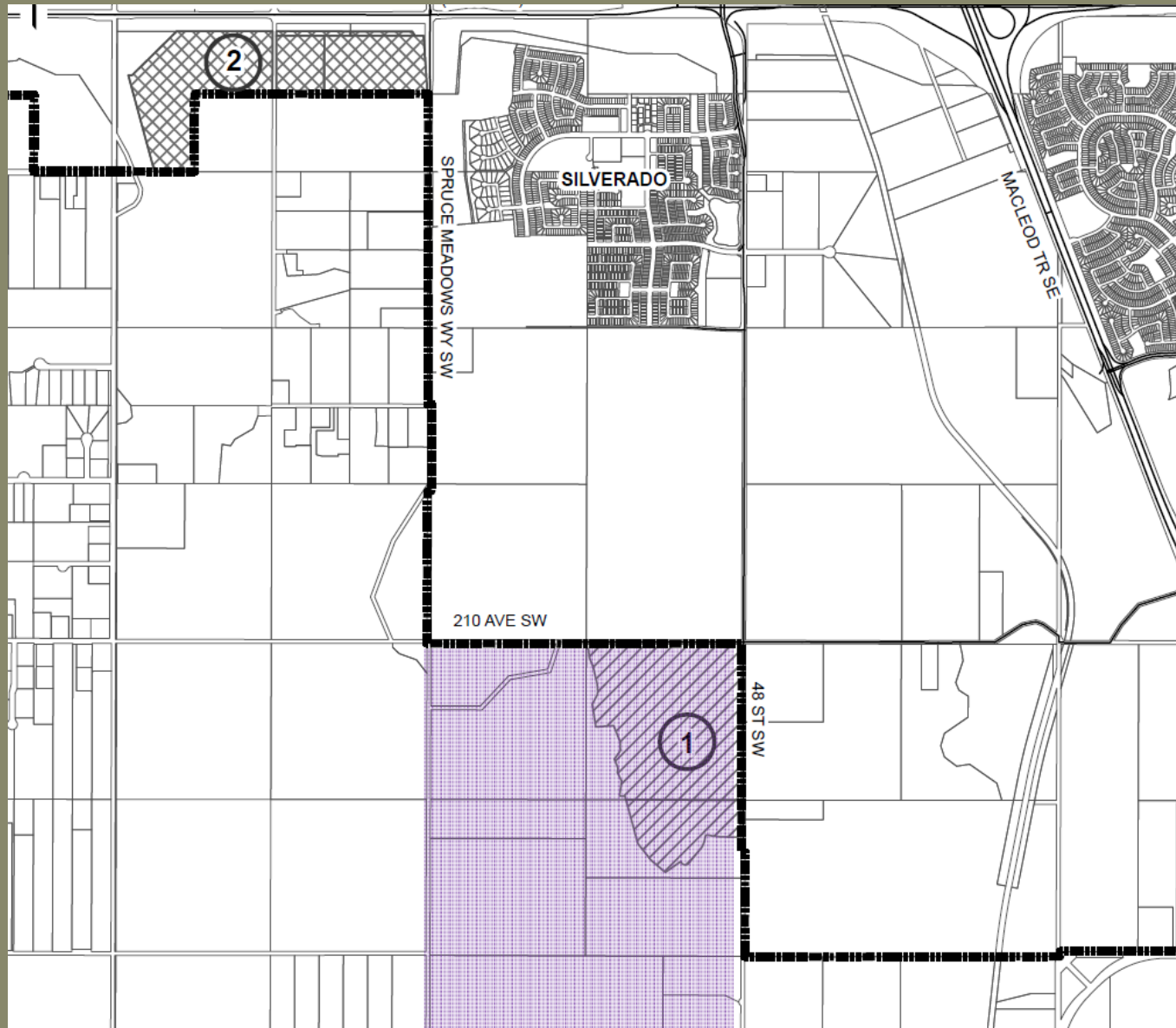
Sirocco Area Structure Plan



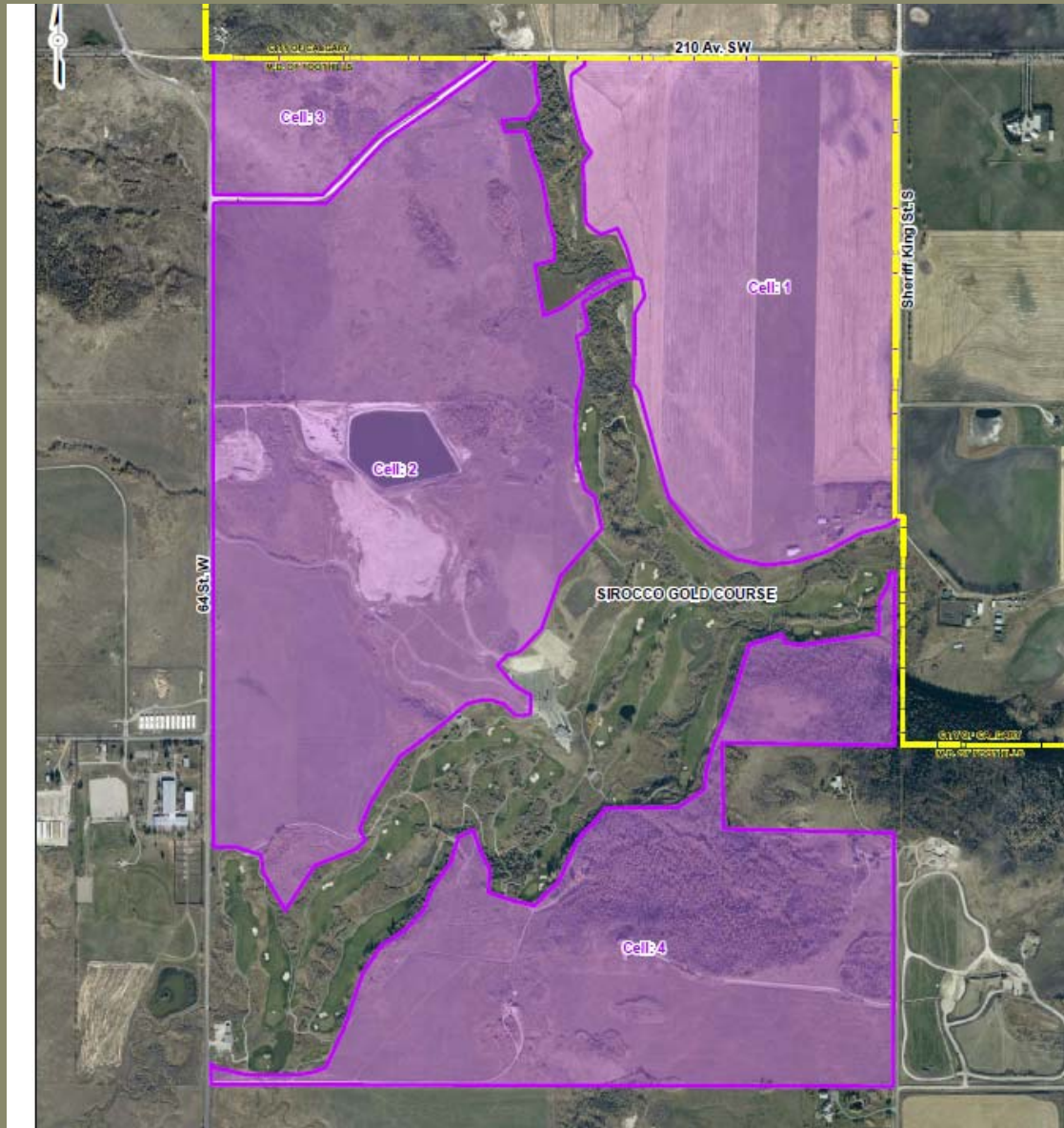
General Location



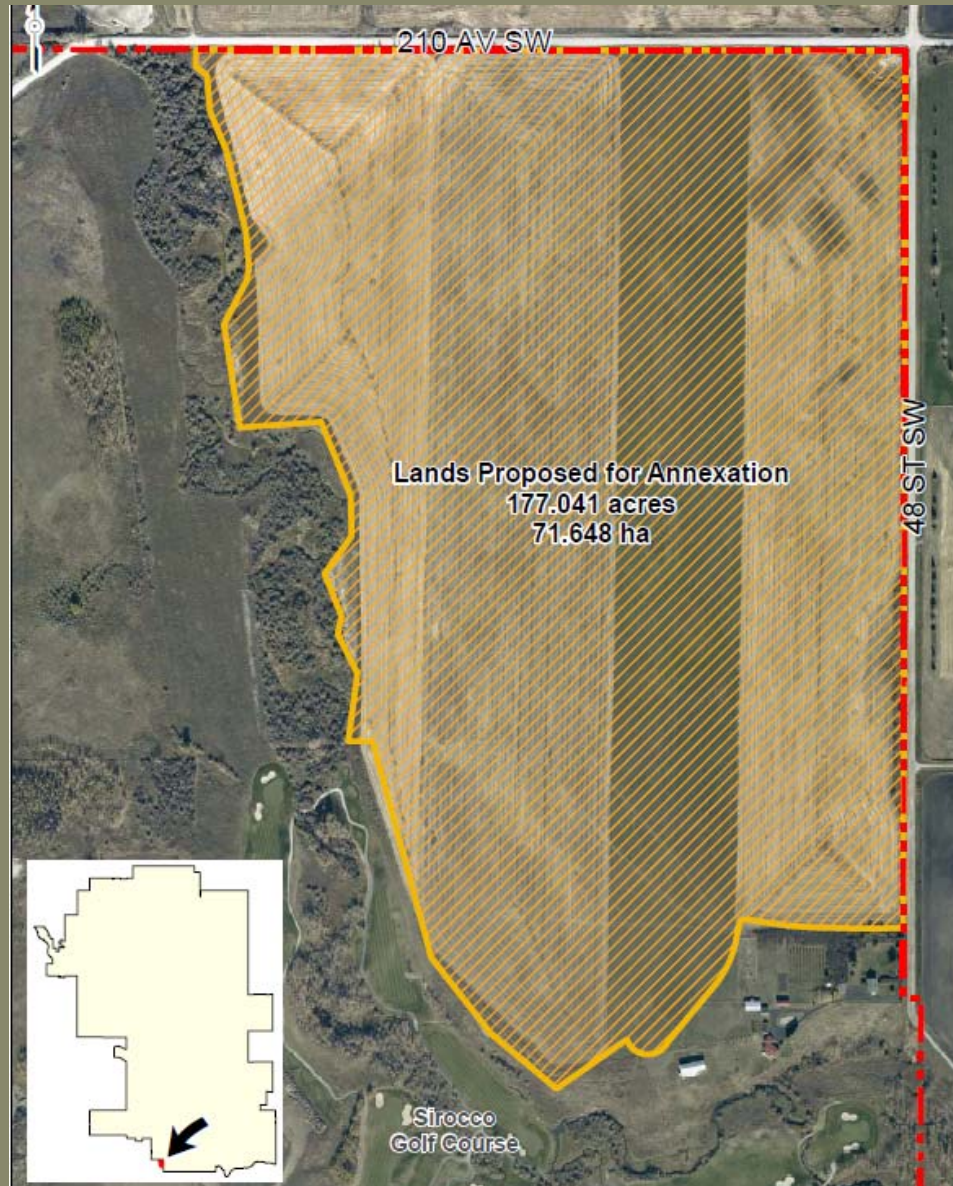
General Location



Sirocco Area Structure Plan



Proposed Annexation Area



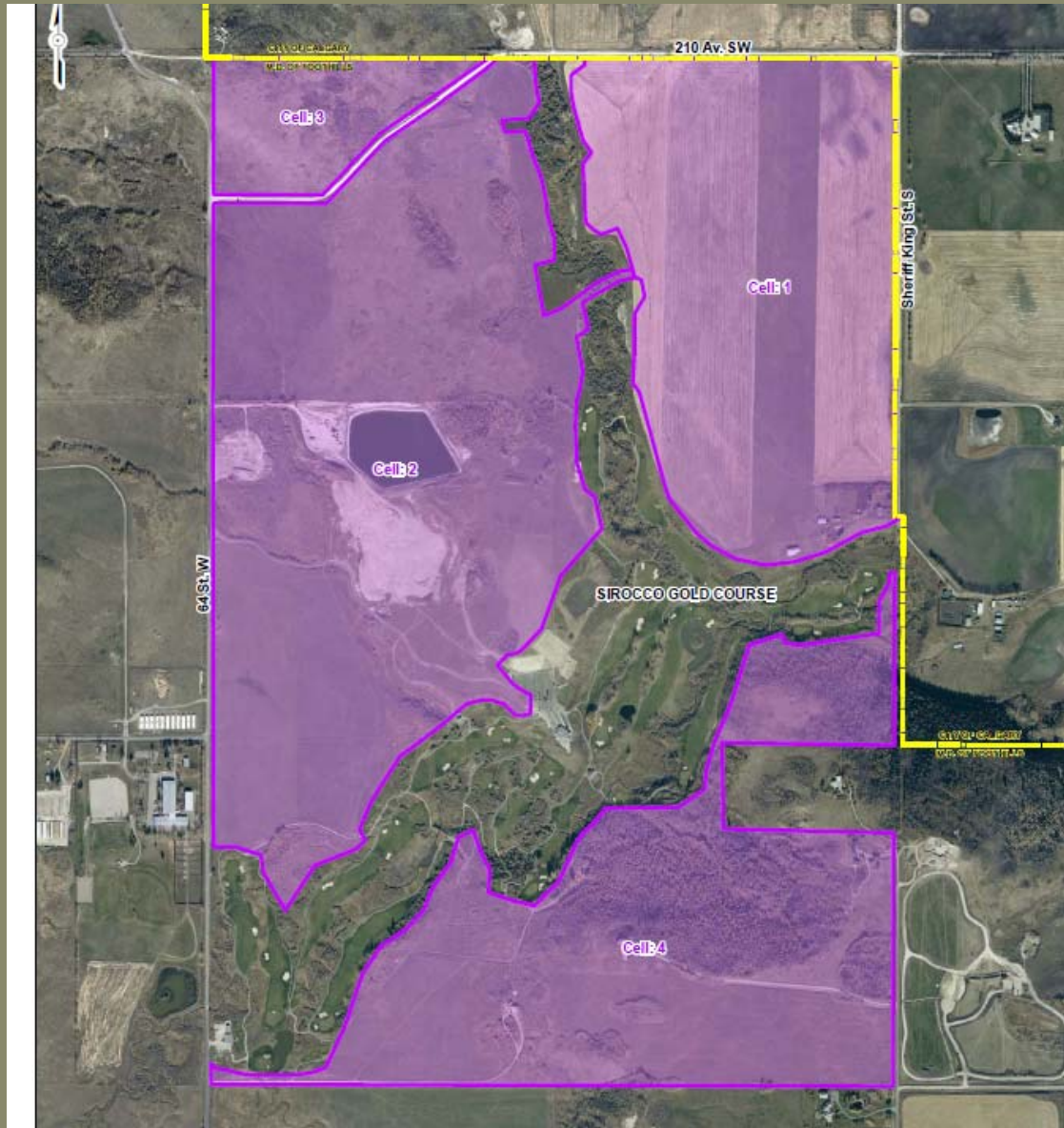
Timeline - Background

- The Sirocco ASP was approved by the MD in May 2009
- The City expressed concerns over the consistency between the ASP and the Intermunicipal Development Plan
 - NE portion (Cell 1) of the ASP is in lands identified as a future urban growth corridor
- A formal appeal was filed in June 2009, leading to mediation between the municipalities

Timeline - Background

- As a result of mediation an agreement was reached in November 2009
- One element of this agreement was the proposed annexation of the NE portion of the Sirocco ASP lands by The City of Calgary

Sirocco Area Structure Plan



Timeline - Background

- At the same time, the MD will make application to annex the Spruce Meadows lands
 - MD gave notice of intent to annex in 2007
 - Little progress made to resolution in light of on-going Intermunicipal Development Plan review
- Intended withdrawal of appeal after applications

Why is the City proposing to annex?

- Annexation of these lands by the City of Calgary:
 - is consistent with The MD of Foothills / City of Calgary Intermunicipal Development Plan
 - Allows for future urban development and provision of services
 - Fulfils City commitments under the terms of the memorandum of understanding

Intermunicipal Development Plan

- An Intermunicipal Development Plan is a statutory planning document
- Jointly written by the MD and the City in 1998, it provides “the rule book” for planning near our common boundaries
- Under the IDP, the lands proposed for annexation are identified as a primary growth corridor for the City

IDP – Primary growth corridors

- Primary growth corridors provide “...the best opportunities for the most efficient and economical urban development to the south of the current city limits.”
- Lands proposed for annexation are fully situated within the primary growth corridor
- Appropriate for land to be brought into the city to enable planning processes that will lead to the future development of these lands as part of Calgary

Towards an Annexation Agreement

- Initiation of annexation – January 2010
- Public consultation – Today
- Next steps include negotiation between municipalities towards achieving an annexation agreement
- A number of issues will be considered in this agreement
 - Compensation, taxation, planning and development, transportation impacts

Annexation Considerations

- Compensation considerations

Annexation Considerations

- Compensation considerations
 - Proposed that no compensation for annexation lands will be due either municipality

Annexation Considerations

- Compensation considerations
 - Proposed that no compensation for annexation lands will be due either municipality
- Taxes and assessment

Annexation Considerations

- Compensation considerations
 - Proposed that no compensation for annexation lands will be due either municipality
- Taxes and assessment
 - If the annexation is confirmed by the Province, it is proposed that lands will be taxed at same rate as other similar properties in the City

Annexation Considerations

- Compensation considerations
 - Proposed that no compensation for annexation lands will be due either municipality
- Taxes and assessment
 - If the annexation is confirmed by the Province, it is proposed that lands will be taxed at same rate as other similar properties in the City
- Future development

Annexation Considerations

- Compensation considerations
 - Proposed that no compensation for annexation lands will be due either municipality
- Taxes and assessment
 - If the annexation is confirmed by the Province, it is proposed that lands will be taxed at same rate as other similar properties in the City
- Future development
 - Sirocco ASP and MD land use bylaw to be retained until new plans and zoning considered by Council

Issues related to annexation

- Planning and Development, con't

Annexation Considerations

- Planning and Development, con't
 - Land currently zoned “Agriculture”
 - Zoning will be carried forward; should a change in zoning be proposed a public hearing will be held

Annexation Considerations

- Planning and Development, con't
 - Land currently zoned “Agriculture”
 - Zoning will be carried forward; should a change in zoning be proposed a public hearing will be held
- Transportation Impacts

Annexation Considerations

- Planning and Development, con't
 - Land currently zoned “Agriculture”
 - Zoning will be carried forward; should a change in zoning be proposed a public hearing will be held
- Transportation Impacts
 - Investigating a cooperative approach to development of transportation infrastructure

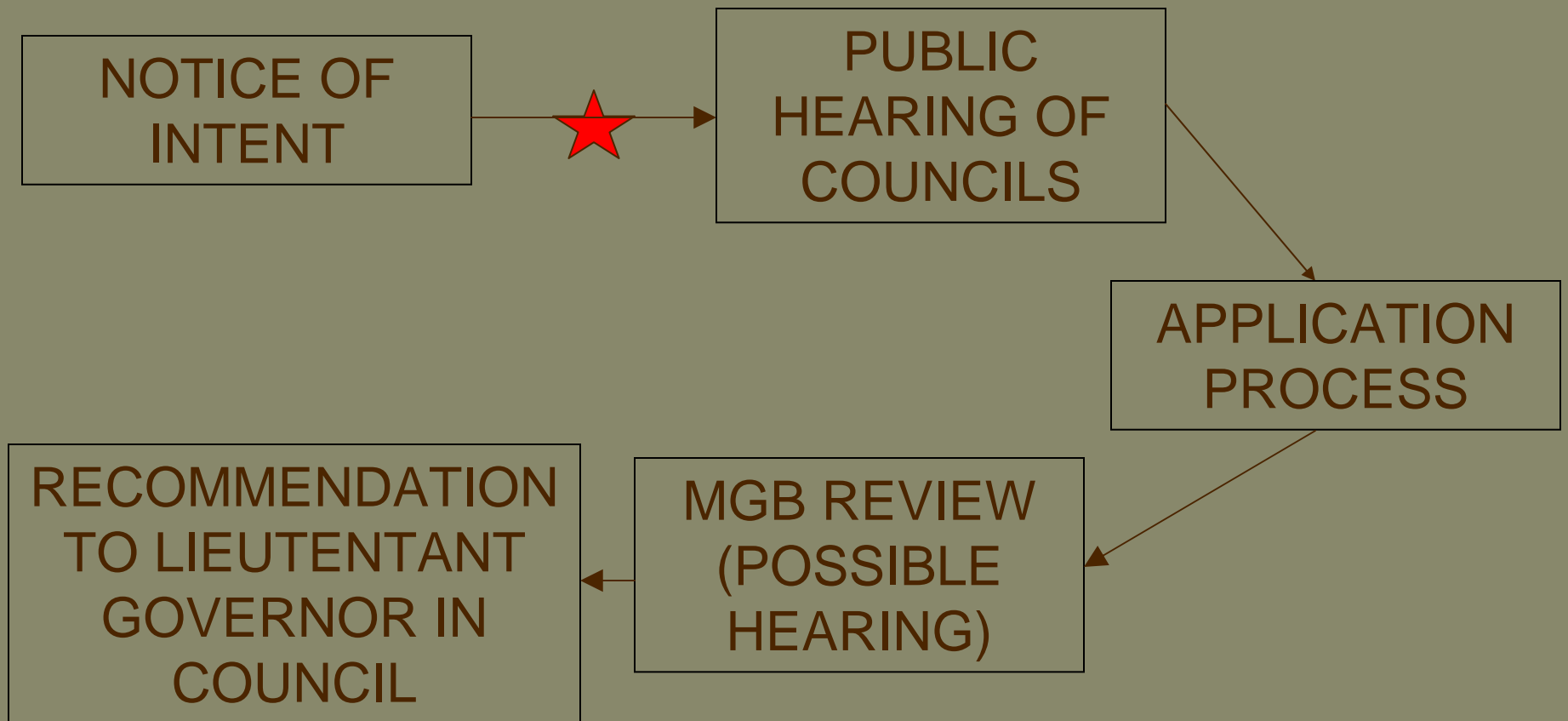
Annexation Considerations

- Planning and Development, con't
 - Land currently zoned “Agriculture”
 - Zoning will be carried forward; should a change in zoning be proposed a public hearing will be held
- Transportation Impacts
 - Investigating a cooperative approach to development of transportation infrastructure
- Effective date

Annexation Considerations

- Planning and Development, con't
 - Land currently zoned “Agriculture”
 - Zoning will be carried forward; should a change in zoning be proposed a public hearing will be held
- Transportation Impacts
 - Investigating a cooperative approach to development of transportation infrastructure
- Effective date
 - Proposed to be January 1, 2011

Annexation Process - Simplified



Next Steps

- Annexation Negotiation Committee meet to finalize outstanding details of the two annexation applications
- City of Calgary Public Hearing on the two applications scheduled for April 12th, 2010
- MD of Foothills Public Hearing on the two applications scheduled for April 8th, 2010

Next Steps

- After these two hearings, Councils will consider the annexation applications, and if approved, direct them to be submitted to the Municipal Government Board
- Municipal Government Board may hold a hearing, dependant on the concerns noted by the public and/or landowners

Questions

General questions, or questions pertaining to both applications.

MD and City staff are available to speak directly to you afterwards.