



Dear Landowner,

You are invited to attend an Open House regarding the annexation of lands by The Municipal District of Foothills No. 31 and The City of Calgary:

**DeWinton Community Hall (see map on reverse side)
Wednesday March 10rd, 2010
5:30-8:30pm,
Presentation @ 6:30pm**

The MD of Foothills No. 31 and The City of Calgary are jointly hosting an Open House regarding two annexation applications currently being considered.

1. The MD of Foothills will be considering an application to the Province of Alberta to annex approximately 136 acres of land currently in the City of Calgary land into the MD of Foothills.
2. The City of Calgary will be considering an application to the Province of Alberta to annex approximately 150 acres of land currently in the MD of Foothills into the City of Calgary.

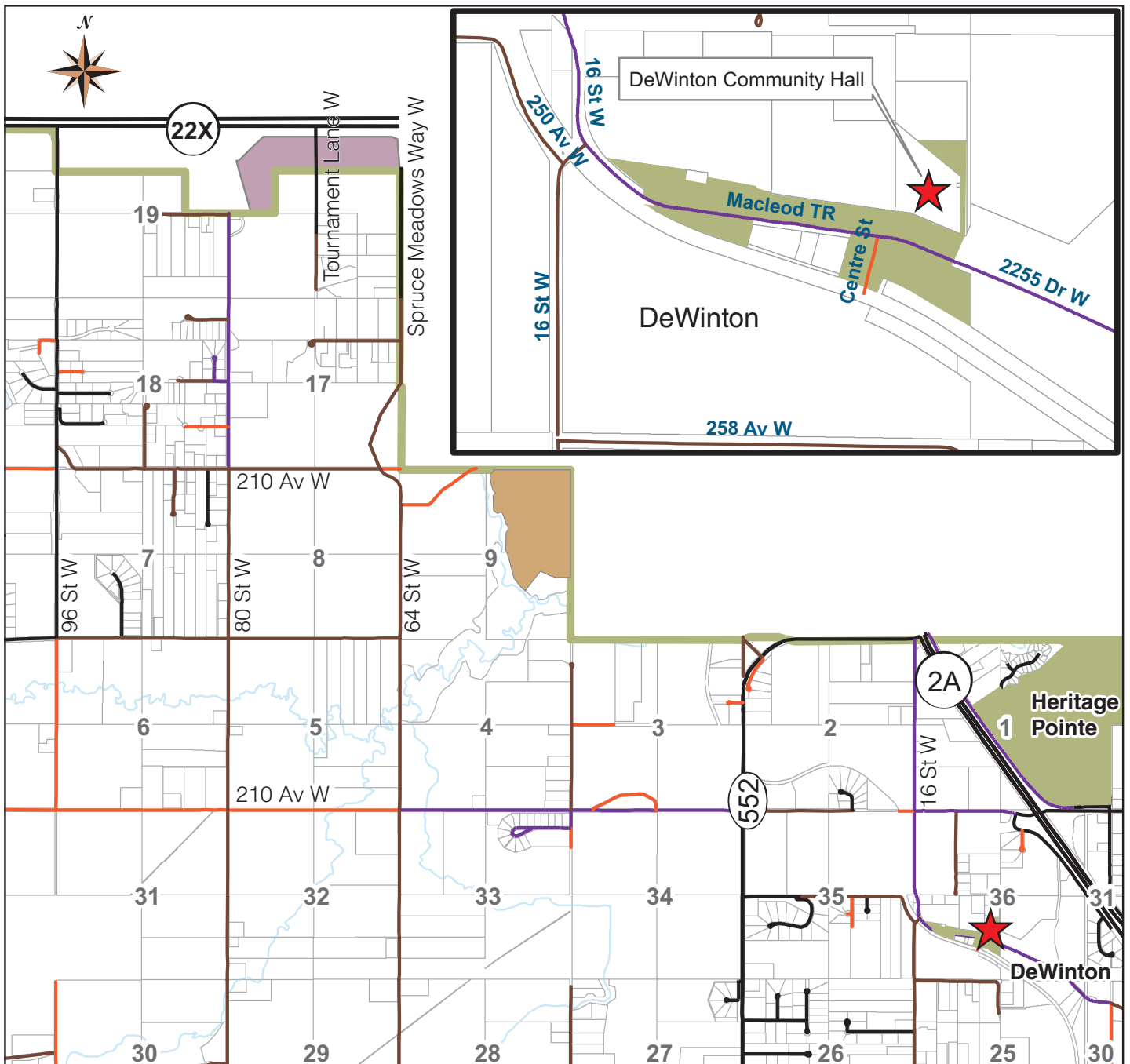
(see proposed annexation areas on reverse side)

Representatives from The MD and The City will be at the Open House. A presentation will begin at 6:30pm. Afterwards you will be able to view information displays and staff will be available to speak with you. The purpose of the joint Open House is to present information to interested landowners and stakeholders and to receive comments regarding the proposed annexations. We hope you are able to attend and provide us with your opinion.

If you are unable to attend and would like more information, please visit: www.mdfoothills.com and www.calgary.ca/annexation or contact:

Heather Hemingway
Municipal Planner
MD of Foothills No. 31
Phone: (403)652-2341
Fax: (403) 652-7880
Email: heather.hemingway@mdfoothills.com

Neil Younger
Senior Planner
The City of Calgary
Phone: (403) 268-3243
Fax: (403) 268-3542
Email: neil.younger@calgary.ca



Legend

- Sirocco Annexation Area
- Spruce Meadows Annexation Area

Date printed February 9, 2010

This map is compiled by the Municipal District of Foothills No. 31. Reproduction, in whole or in part, is prohibited without express permission from the Municipal District of Foothills No.31. The MD of Foothills No. 31 provides this information in good faith but provides no warranty nor accepts any liability arising from incorrect, incomplete or misleading information or its improper use. Information is maintained on a regular basis.

Data Sources Include Municipal Records and AltaLIS.